

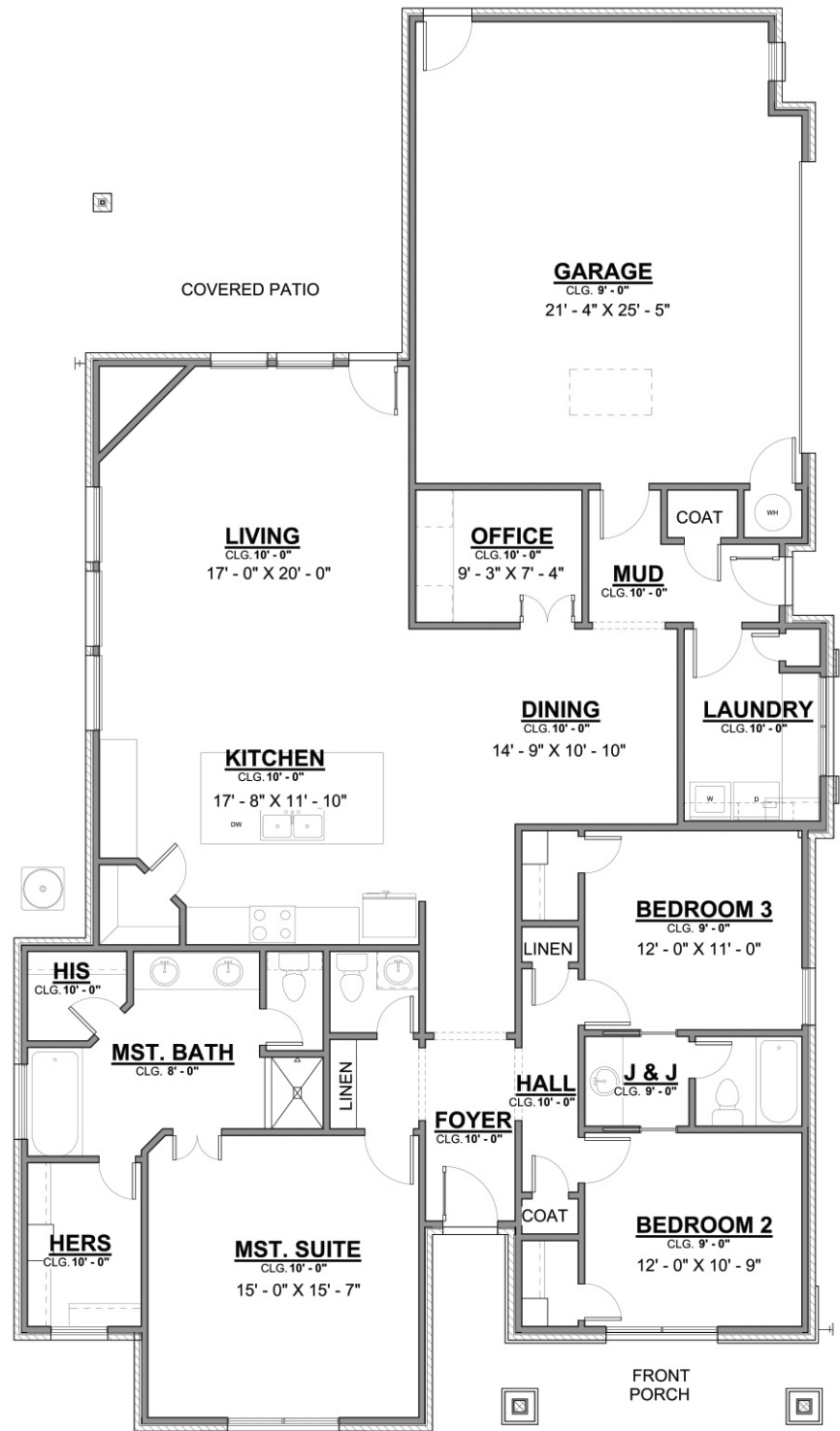
# the BRIDGEPORT

approx. 2155 sq. ft.

Elevation A



Elevation B



See **OPTIONS** on reverse side

Window sizes, porches and options may vary based on community and elevation chosen by customer.

**MASHBURN** **MF** **FAIRES**  
H O M E S  
**mfhomes.com**

This plan is copyrighted; any reproduction or use in construction is prohibited. Finished square footage calculations for this house were based on plan dimensions only and may vary from the square footage of the house as built. Room dimensions are approximate. All pricing is subject to change without notice.

